

SEBAGO LAKE LAND RESERVE

TRAIL MAP



1,700 ACRES of land near Sebago Lake, with over 13.5 MILES of trails on 500 ACRES in the Otter Ponds area

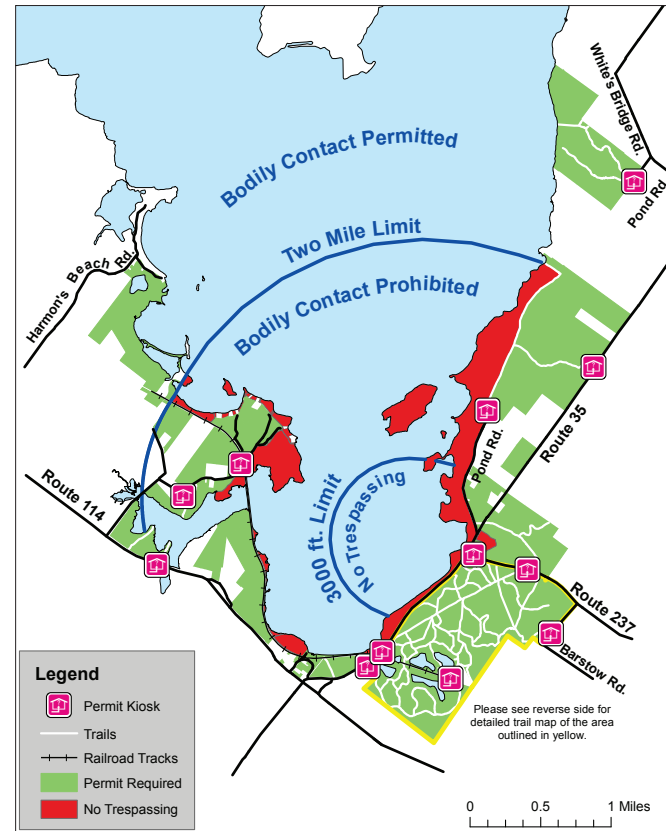
Land access permit required and valid for one day's visit

**RESPECT the land.**  
**PROTECT the lake.**

WELCOME

The 1,700 acre Sebago Lake Land Reserve is a managed forest intended to protect Sebago Lake, our local drinking water supply. Sebago Lake provides drinking water to 200,000 people in the greater Portland region. The Land Reserve has been open to the public for free since 2005 for recreation, such as hiking, snowshoeing, fishing, and horseback riding. Its trail network connects to other local trail systems, including Sebago to the Sea and the Mountain Division trails.

In 2013, PWD concluded a three year project on the Land Reserve trails to improve access and usability. Trails were cleared, defined, and identified using GPS technology, signs were installed, and this trail map was created. The map on the reverse side depicts over 13.5 miles of trails within the 500 acre Otter Ponds section of the Land Reserve.



LAWS protecting Sebago Lake:

- Trespassing is forbidden on posted lands and water within the Lower Bay of Sebago Lake.
- Bodily contact is forbidden within two miles of the Portland Water District intakes (see map above for restricted areas).
- Fines of \$500, \$1,000, and \$2,500 apply for each subsequent offense. Fines up to \$2,500 for multiple offenses.

RULES of use  
Open dawn until dusk

PERMITTED activities:

- Hunting
- Fishing
- Trapping
- Hiking/walking on designated trails
- Mountain biking on designated trails
- Horseback riding on designated trails
- Cross country skiing on designated trails
- Snowshoeing on designated trails
- Snowmobiling on designated trails
- Berry picking on designated trails
- Environmental education (< 25 people)

PROHIBITED activities:

The following are not permitted on Portland Water District land

- No all-terrain vehicles
- No camping/tenting
- No fires
- No night access between dawn and dusk
- No cutting or defacing trees or vegetation
- No soil disturbance
- No littering



Fill out a Land Access Permit at one of the kiosks.

A new permit is required each day you visit and may be completed at self-service kiosks. Keep your copy of the permit with you at all times. Please observe the rules and signs as posted.

A shared resource is a shared responsibility.

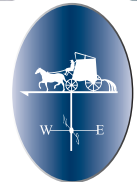
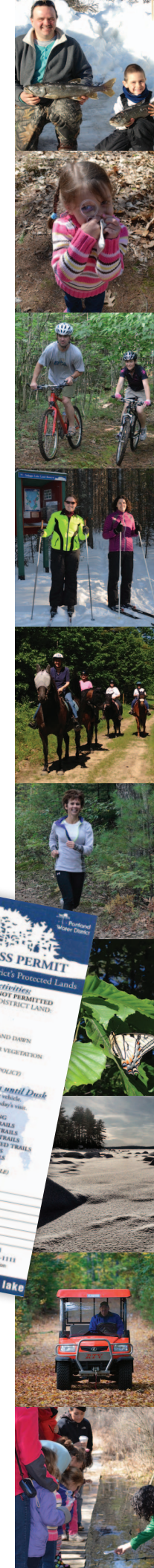
Questions or to report a concern:

Call Portland Water District  
207-774-5961 ext. 3350  
or email [sebagolake@pwd.org](mailto:sebagolake@pwd.org)

To receive information about our events and efforts to protect Sebago Lake, like us on or join our email list – email [sebagolake@pwd.org](mailto:sebagolake@pwd.org) to sign up!

For more information: [www.pwd.org](http://www.pwd.org)

Please help protect Sebago Lake and the Land Reserve:  
**CARRY IN, CARRY OUT!**

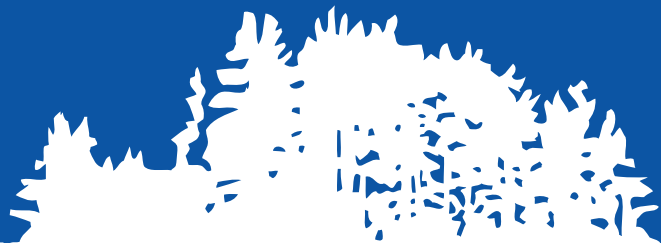


Portland Water District  
FROM SEBAGO LAKE TO CASCO BAY

In partnership with









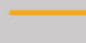

SEBAGO LAKE LAND RESERVE

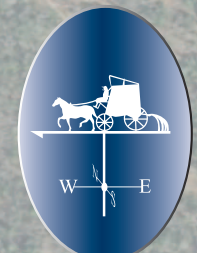
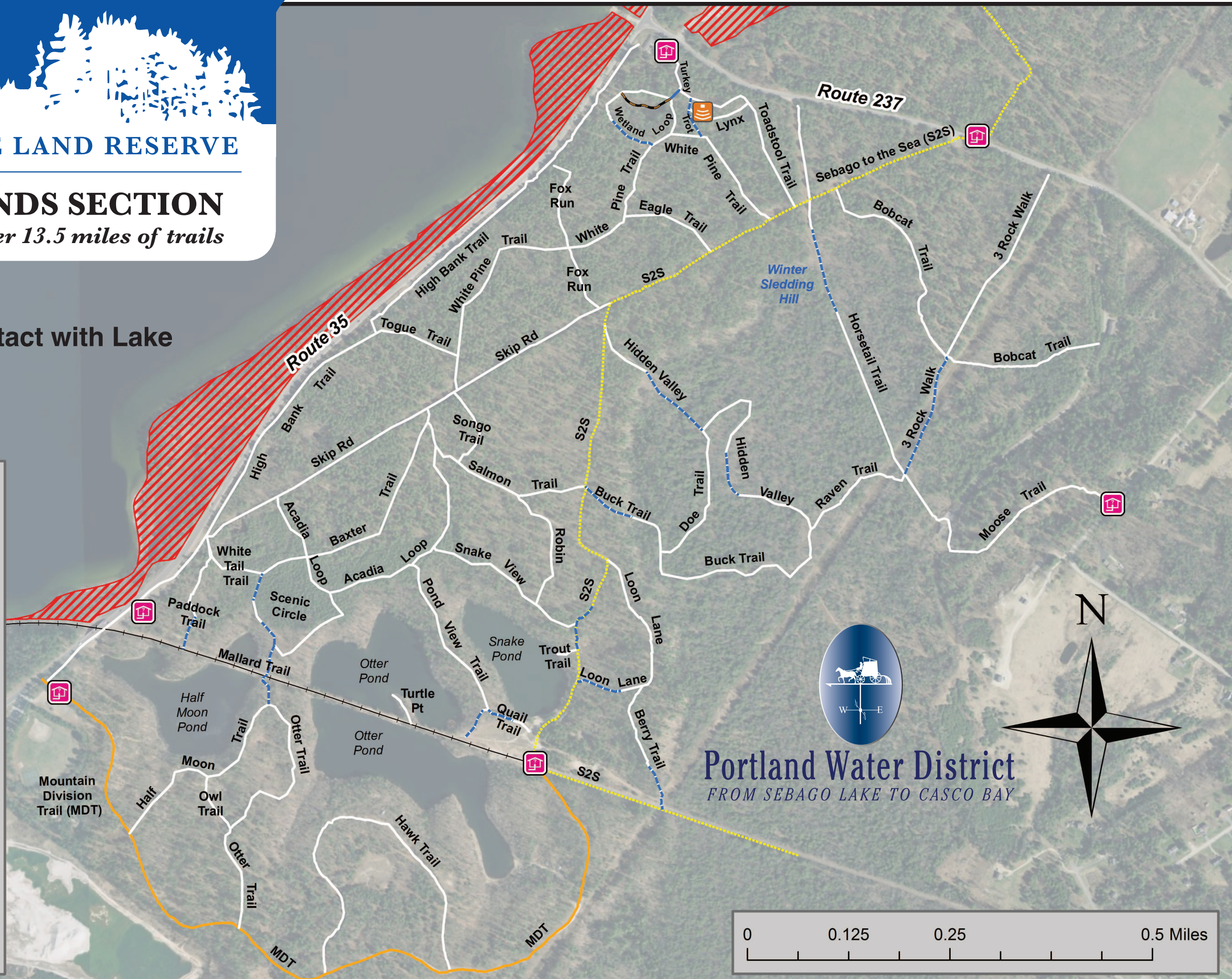
OTTER PONDS SECTION

500 acres with over 13.5 miles of trails

No Bodily Contact with Lake

**Legend**

-  Kiosk
-  Amphitheater
-  Trails
-  Steep Trail
-  Sebago to the Sea Trail
-  Mountain Division Trail
-  Boardwalk
-  Railroad Tracks
-  No Trespassing



Portland Water District  
FROM SEBAGO LAKE TO CASCO BAY

